

**Massive channel system
FMS.**
Efficient fixing solution for
heavy-duty installations.



Massive channel system FMS

Efficient heavy-duty installations.

Environment and area of application.



Pipe mounts attached to a secondary steel structure are used in technical building services (TBS) and in industrial and system applications.

The secondary steel structure is installed in the course of installing heavy-duty pipelines or cable ducts, and frequently includes platforms or bridges suitable for walking on, which are used for servicing purposes.

Applications and customer requirements

Often, standard steel profiles are used to attach heavy-duty pipelines and cable racks. These are typically planned and pre-assembled, then installed on the construction site.

A flexible and efficient alternative to conventional steel structures must take the following customer requirements into account:

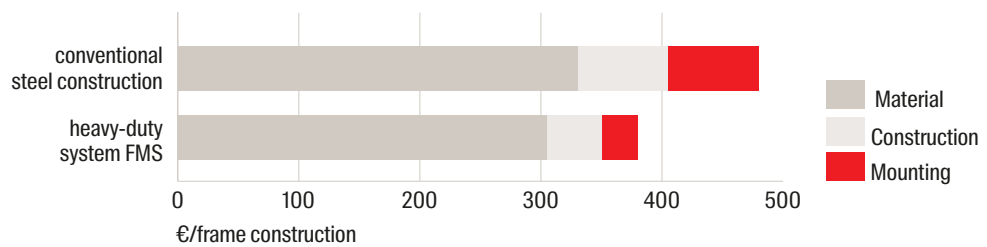
- Reducing construction time, and thereby reducing overall costs.
- Avoiding pre-assembly and resulting transportation difficulties.
- Avoiding the need of additional painting after installation.
- Easy alignment without cutting and welding.
- Possible to completely construct the structure on the construction site.
- Reducing the weight of the installation element.
- Dust-free set-up of the product solution on the construction site, without the risk of expected restrictions such as prohibitions on welding.

Time and costs. Two factors – one solution.



Possible savings of up to 30%

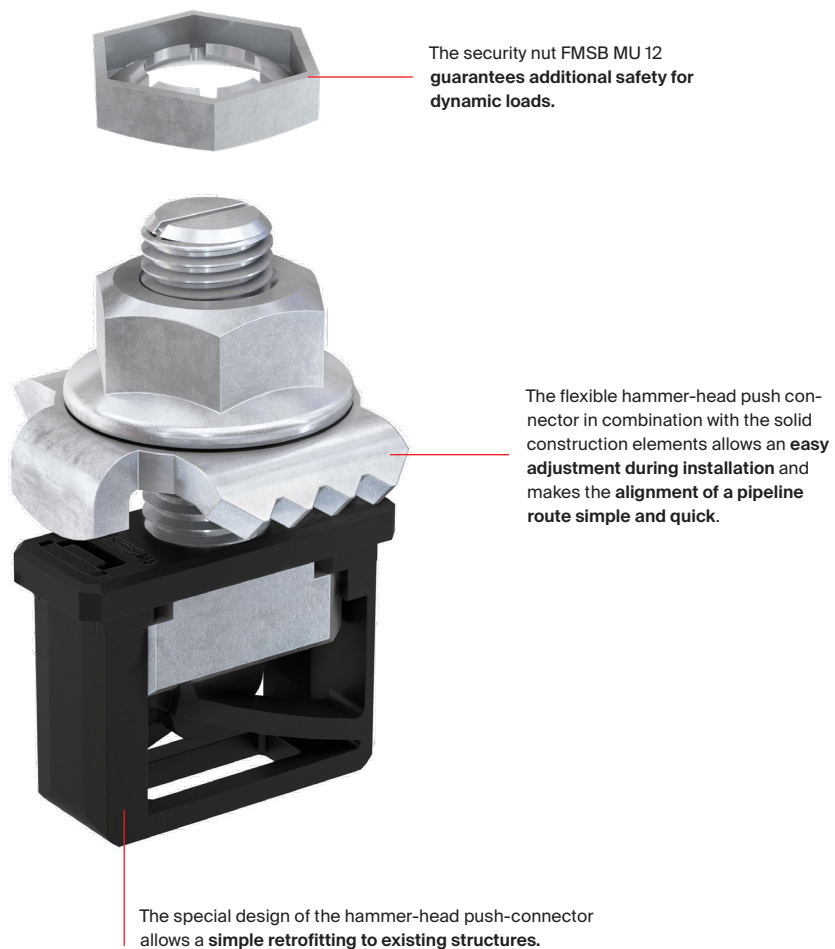
Comparison between the FMS channel system and conventional steel construction



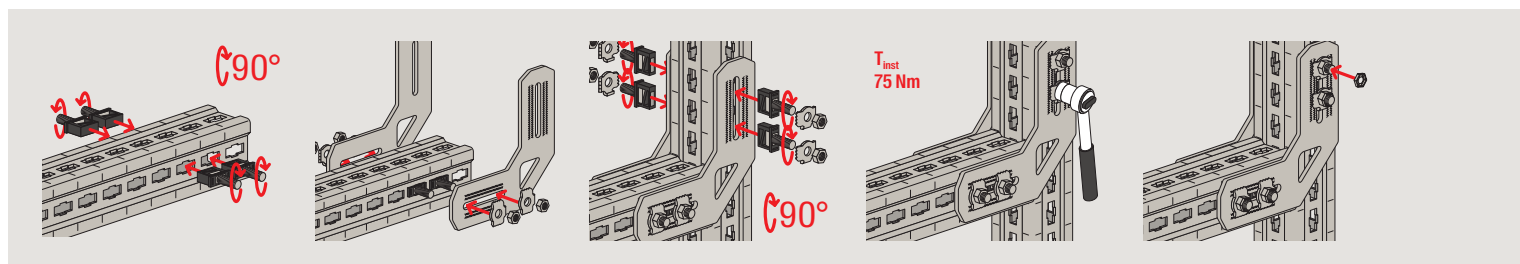
Unique product solutions. Pre-positioned turning connector.

FMHB hammer-head push-connector - the universal connector for massive profiles FMP and construction elements.

The unique hammer-head push connector allows an easy modification of the construction and thus ensures fast design changes.

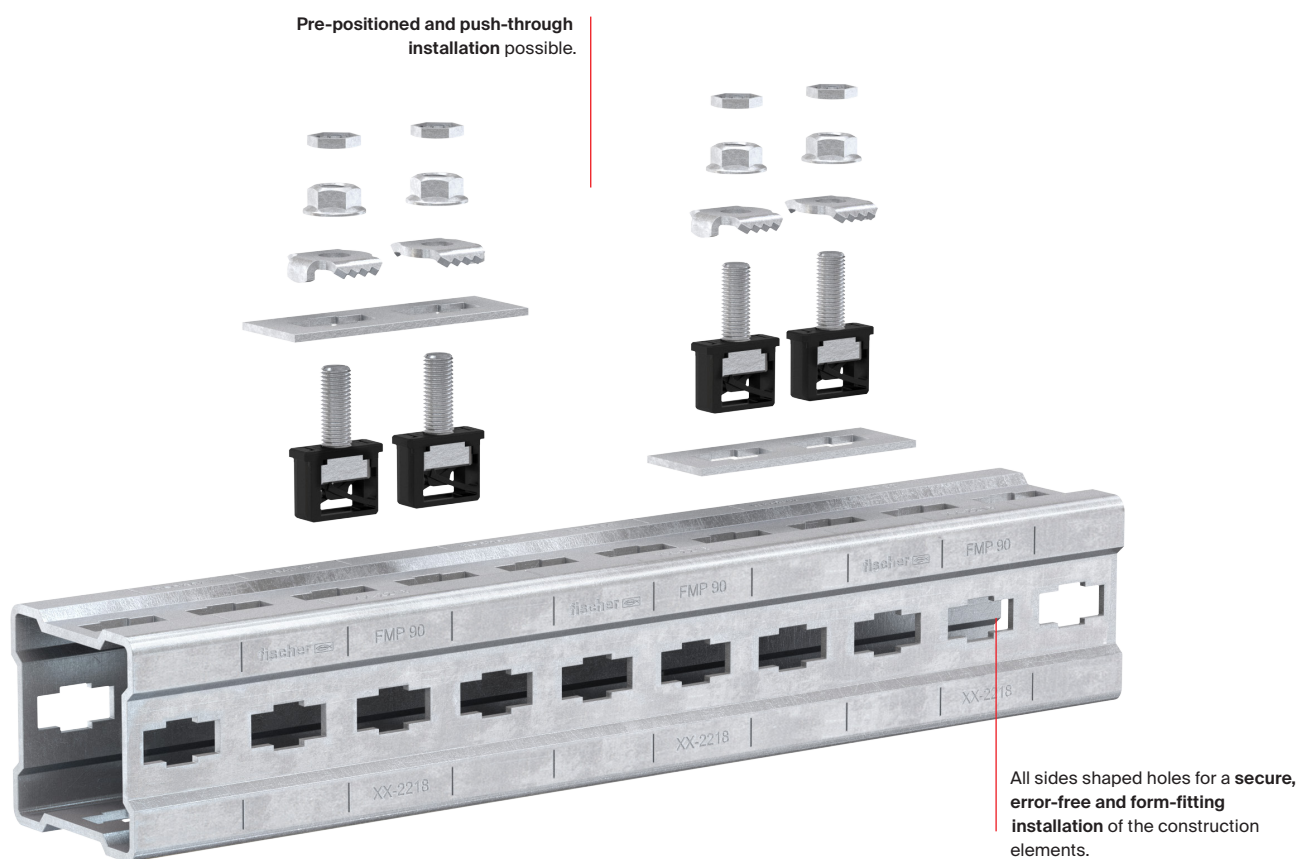


Installation



On-site assembly. Without prefabrication.

Easy cutting to length of the mounting profiles on-site facilitates the handling on the construction site.



Functioning

- The fischer massive profiles FMP can be square cut, thus reducing waste and material costs.
- The prefabricated construction elements do not require on-site welding or extensive prefabrication. This ensures smooth assembly preparation and execution.
- The hot-dip galvanised product range guarantees on-site processing without subsequent coating speeding the assembly process sustainably.

Your advantages at a glance:

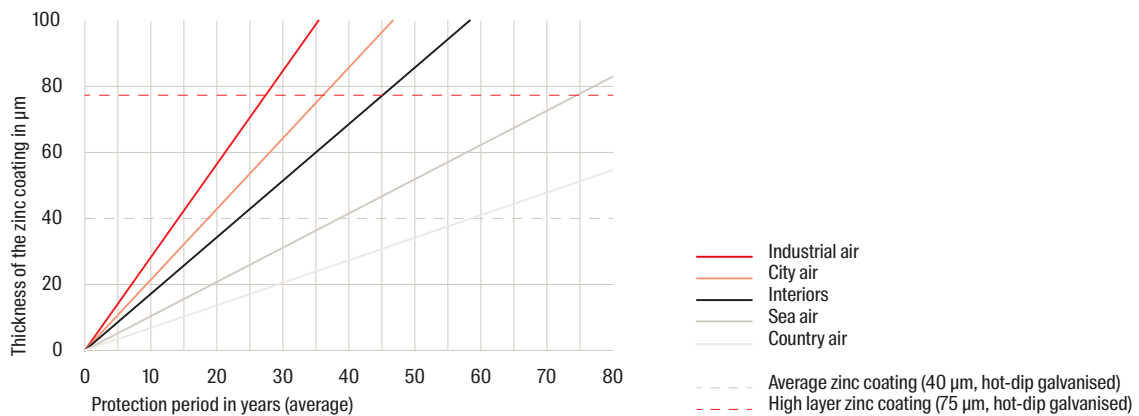
- The clearly arranged product range of profiles and construction elements enables on-site assembly without prefabrication and thus considerably reduces costs and time.
- The static software reliably and securely supports plannings and calculations of all types of constructions on basis of valid standards.
- The construction with the fischer massive channel system FMS also generates a fixing basis for dynamic loads and makes the system universally applicable.
- The massive profiles FMP as square hollow profiles reduce the weight compared to other conventional steel constructions and enable an easy handling on construction site.

Increased corrosion resistance.



Increased corrosion resistance of the massive profiles FMP: galvanisation of min. 75 µm.

The thick coating of the hot-dip galvanised version is suitable for outdoor installations and in corrosive environments.



Applications

Frame construction standing



With mounting bracket FMA 90, 120 or 160, fits massive profiles FMP 90, 120 and 160

Fastening rails to steel constructions



With clamp supports FMBC 90, 120 and 160, fits massive profiles FMP 90, 120 and 160

Fastening to the steel construction



With base plates – FMS Saddle flanges and FMBP base plates

Hanging frame construction



With two mounting brackets each FMFF 90°, fits all massive profiles FMP 90, 120 and 160

Supported structure with variable connectors



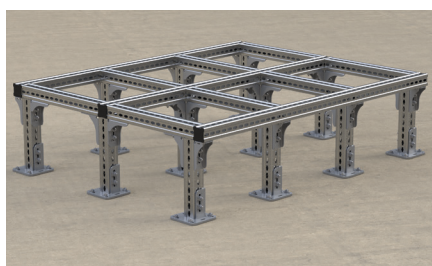
With joint connectors for profile connection FMVB-P and base plate FMVB-BP

Fastening to the steel structure



With beam clamps FMBC M12 or M16 and FMSF saddle flanges

Platform construction as roof elevating frame



3D-construction with FMA3 and FMA4 attachment brackets that can be attached to all four sides of the FMP massive profile

Hanging bracket – construction with base profile on the ceiling



With U-connectors FMUF 90, 120 and 160, fits massive profiles FMP 90, 120 and 160

Connection of pipes with threaded rods and pipe clamps to FMP profiles



With the FMHI Internal thread connector M12

Assortment



FMP Massive profile



FMPC Profile connector



FMPC Profile connector



FMC Cantilever arm



FMEC End cap

Article description	Art.-No.	Sales Unit [pcs]
FMP 90 3m Massive profile	547795	1
FMP 90/2,5 3m Massive profile	560562	1
FMP 90 6m Massive profile	547796	1
FMP 90/2,5 6m Massive profile	560563	1
FMP 120 3m Massive profile	547797	1
FMP 120 6m Massive profile	547798	1
FMP 160 6m Massive profile	547799	1
FMP 160 8m Massive profile	547800 ¹⁾	1
FMPC 90 Profile connector	554236	5
FMPC 120 Profile connector	554237	2
FMPC 160 Profile connector	554238	2
FMPC Profile connector	547801	2
FMC 90-500 Cantilever arm	547802	1
FMC 90-750 Cantilever arm	547803	1
FMC 90-1000 Cantilever arm	547804	1
FMC 90-1500 Cantilever arm	547805	1
FMEC 90 End cap	547806	100
FMEC 120 End cap	547807	60
FMEC 160 End cap	547808	40

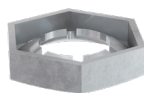
¹⁾ delivery on request



FMHB Hammer-head-push-connector



FMHI Internal thread connector



FMSB MU Hexagon safety nut



FMTC 90 Transportation connector



FMCE M Connecting element



FMCE L-Connecting element

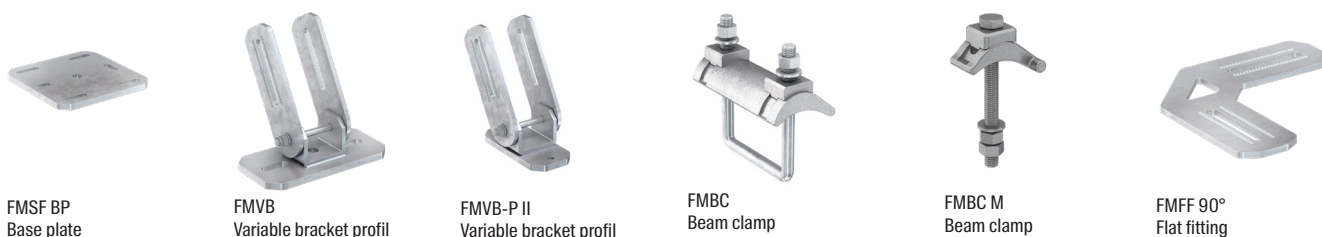


FMCE-L short Connecting element

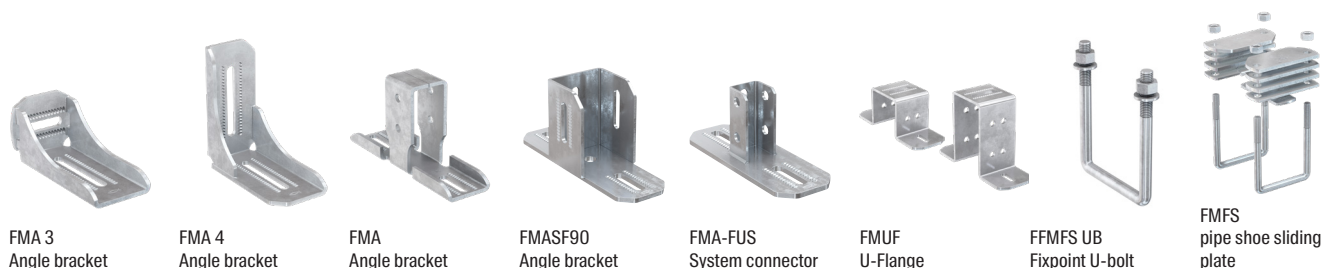


FMSF Saddle flange

Article description	Art.-No.	Sales Unit [pcs]
FMHB Hammer-head-push-connector	547809	100
FMHI Internal thread connector M12	563108	100
FMSB MU M12 Hexagon safety nut	547810	100
FMTC 90 Transportation connector	568825	2
FMCE M12/M16 Connecting element	547815	10
FMCE 1/2" Connecting element	547816	10
FMCE 3/4" Connecting element	547817	10
FMCE L-Connecting element M12	547818	10
FMCE L-Connecting element M16	547819	10
FMCE L-Connecting element M20	547820	10
FMCE-L short M12 Connecting element	554239	20
FMCE-L short M16 Connecting element	554240	20
FMCE-L short M20 Connecting element	554241	20
FMSF 90S Saddle flange	547821	1
FMSF 90M Saddle flange	547822	1
FMSF 90L Saddle flange	547823	1
FMSF 120S Saddle flange	547824	1
FMSF 120M Saddle flange	547825	1
FMSF 120L Saddle flange	547826	1
FMSF 160M Saddle flange	547827	1
FMSF 160L Saddle flange	547828	1



Article description		[pcs]
FMSF BP S Base plate	547829	1
FMSF BP M Base plate	547830	1
FMSF BP L Base plate	547831	1
FMVB P Variable bracket profil	547832	4
FMVB BP S Variable bracket	547833	2
FMVB BP M Variable bracket	547834	2
FMVB BP L Variable bracket	547835	2
FMVB-P II Variable bracket profil	554242	2
FMBC 90 Beam clamp	547836	4
FMBC 120 Beam clamp	547837	4
FMBC 160 Beam clamp	547838	4
FMBC M12 Beam clamp	547839	16
FMBC M16 Beam clamp	547840	12
FMFF 90° Flat fitting	547841	1



Article description	Art.-No.	Sales Unit [pcs]
FMA 3 Angle bracket	547842	10
FMA 4 Angle bracket	547843	8
FMA 90 Angle bracket	547844	4
FMA 120 Angle bracket	547845	4
FMA 160 Angle bracket	547846	4
FMAF90 Angle bracket	568823	4
FMA-FUS System connector	568824	6
FMUF 90 U-Flange	547847	8
FMUF 120 U-Flange	547848	8
FMUF 160 U-Flange	547849	8
FMFS UB 90 Fixpoint U-bolt	547850	50
FMFS UB 120 Fixpoint U-bolt	547851	40
FMFS UB 160 Fixpoint U-bolt	547852	30
FMFS SP pipe shoe sliding plate	547853	10
FMFS SH pipe shoe sliding holder	547854	10
FMFS DP4 pipe shoe distance plate	547855	20
FMFS DP6 pipe shoe distance plate	547856	20
FMFS LL pipe shoe lift lock	547857	20

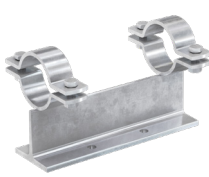
Assortment



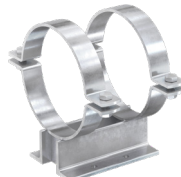
FMFS
Fixpoints saddle



FMPS 1/1
Pipe shoe



FMPS 1/2
Pipe shoe



FMPS 2/2
Pipe shoe

Article description	Art.-No.	Sales Unit [pcs]
FMFS S Fixpoints saddle	547860	2
FMFS M Fixpoints saddle	547861	2
FMPS 25 1/1-80 Pipe shoe	547862	1) 1
FMPS 40 1/1-80 Pipe shoe	547863	1) 1
FMPS 50 1/1-80 Pipe shoe	547864	1) 1
FMPS 65 1/1-80 Pipe shoe	547865	1) 1
FMPS 80 1/1-80 Pipe shoe	547866	1) 1
FMPS 25 1/1-150 Pipe shoe	548410	1) 1
FMPS 40 1/1-150 Pipe shoe	547867	1) 1
FMPS 50 1/1-150 Pipe shoe	547868	1) 1
FMPS 65 1/1-150 Pipe shoe	547869	1) 1
FMPS 80 1/1-150 Pipe shoe	547870	1) 1
FMPS 100 1/1-150 Pipe shoe	547871	1) 1
FMPS 125 1/1-150 Pipe shoe	547872	1) 1
FMPS 150 1/1-150 Pipe shoe	547873	1) 1
FMPS 200 1/1-150 Pipe shoe	547874	1) 1
FMPS 25 1/2-80 Pipe shoe	547875	1) 1
FMPS 25 1/2-150 Pipe shoe	547876	1) 1
FMPS 40 1/2-80 Pipe shoe	547877	1) 1
FMPS 40 1/2-150 Pipe shoe	547878	1) 1
FMPS 50 1/2-80 Pipe shoe	547879	1) 1
FMPS 50 1/2-150 Pipe shoe	547880	1) 1
FMPS 65 1/2-80 Pipe shoe	547881	1) 1
FMPS 65 1/2-150 Pipe shoe	547882	1) 1
FMPS 80 1/2-80 Pipe shoe	547883	1) 1
FMPS 80 1/2-150 Pipe shoe	547884	1) 1
FMPS 100 1/2-110 Pipe shoe	547885	1
FMPS 100 1/2-150 Pipe shoe	547886	1) 1
FMPS 125 1/2-110 Pipe shoe	547887	1
FMPS 125 1/2-150 Pipe shoe	547888	1) 1
FMPS 150 1/2-110 Pipe shoe	547889	1
FMPS 150 1/2-150 Pipe shoe	547890	1) 1
FMPS 200 1/2-110 Pipe shoe	547891	1
FMPS 200 1/2-150 Pipe shoe	547892	1
FMPS 250 2/2-110 Pipe shoe	547893	1
FMPS 300 2/2-110 Pipe shoe	547894	1
FMPS 350 2/2-110 Pipe shoe	547895	1
FMPS 400 2/2-110 Pipe shoe	547896	1
FMPS 500 2/2-110 Pipe shoe	547897	1
FMPS 600 2/2-110 Pipe shoe	547898	1
FMPS 250 2/2-150 Pipe shoe	547989	1) 1
FMPS 300 2/2-150 Pipe shoe	547900	1) 1
FMPS 350 2/2-150 Pipe shoe	547901	1) 1
FMPS 400 2/2-150 Pipe shoe	547902	1) 1
FMPS 500 2/2-150 Pipe shoe	547903	1) 1
FMPS 600 2/2-150 Pipe shoe	547904	1) 1

1) delivery on request



FMFSC
Heavy duty pipe clamp



FMPSU
Massiv U-bolt

Article description	Art.-No.	Sales Unit [pcs]
FMFSC 25 Heavy duty pipe clamp	547905	1
FMFSC 32 Heavy duty pipe clamp	547906	1
FMFSC 40 Heavy duty pipe clamp	547907	1
FMFSC 50 Heavy duty pipe clamp	547909	1
FMFSC 65 Heavy duty pipe clamp	547910	1
FMFSC 80 Heavy duty pipe clamp	547911	1
FMFSC 100 Heavy duty pipe clamp	547913	1
FMFSC 125 Heavy duty pipe clamp	547915	1
FMFSC 150 Heavy duty pipe clamp	547918	1
FMFSC 200 Heavy duty pipe clamp	547919	1
FMFSC 250/50 Heavy duty pipe clamp	547921	1
FMPSU 25 Massiv U-bolt	547929	50
FMPSU 32 Massiv U-bolt	547930	50
FMPSU 40 Massiv U-bolt	547931	50
FMPSU 50 Massiv U-bolt	547933	50
FMPSU 65 Massiv U-bolt	547934	50
FMPSU 80 Massiv U-bolt	547935	50
FMPSU 100 Massiv U-bolt	547937	25
FMPSU 125 Massiv U-bolt	547939	20
FMPSU 150 Massiv U-bolt	547941	15
FMPSU 200 Massiv U-bolt	547942	8
FMPSU 250 Massiv U-bolt	547943	8

Dealer:

www.fischer-international.com



fischer stands for

Fixing Systems
fischertechnik
Consulting
Electronic Solutions

fischerwerke GmbH & Co. KG
Klaus-Fischer-Straße 1 · 72178 Waldachtal
Germany
P +49 7443 12-0
www.fischer-international.com · info@fischer.de
